



SmartTimer Evaluation Ready-Start Guide

This guide is to provide a quick start guide to the SmartTimer Timer Client program. Additionally, it contains a 15 page excerpt from the main SmartTimer Configuration Guide for configuring the Advanced Security Options.

The full manual is only available to those customers who purchase the SmartTimer Client.

Table of Contents

SmartTimer Evaluation Ready-Start Guide	1	Hide Net Setup ID Page, Hide Printer and File Sharing	8
Table of Contents.....	1	Hide Network Access Control.....	8
IMPORTANT INFORMATION	2	Hide Set Program Access	8
SmartTimer Quick Start Guide	3	Hide Add/Remove Program Restrictions.....	8
Instructions for Smarttimer Client V2.5 Setup and Install	3	Hide File and Screen Sharing Controls.....	9
Smarttimer Security	3	Disable Add Printers, Disable Delete Printers.....	9
1. Please type in the security code provided to you for your own security access.	3	Disable Printer General Pages	9
2. Click on the Button 'Configure Security'	3	Desktop.....	10
3. Click on the Button 'Configure Client'.....	3	Disable Active Desktop.....	10
4. Click on the Button 'System Settings'.....	4	Hide My Computer.....	10
Click on the Password Protection Tab.....	4	Hide Properties in My Computer.....	10
Click on the Edit System Properties Tab.....	4	Hide My Documents, Hide Recycle Bin.....	10
5. Click on the Button 'Advanced Security'	4	Hide All Items on Desktop.....	10
6. Reboot the Computer.....	4	Hide Network Neighbourhood	10
Advanced Security.....	5	Hide Workgroup.....	10
One Touch Setup	5	Don't Save Settings on Logout.....	10
One Touch Remove.....	5	Disable Screen Saver	10
Start Menu	6	No Right Click on Desktop	10
Classic Start Menu (Windows XP).....	6	No ability to customise Toolbars.....	10
Hide Favourites	6	No ability to change or hide Toolbars	10
Hide Documents.....	6	Remove File Menu from Explorer.....	10
Remove My Documents, Remove My Pictures, Remove My Music.....	6	Disable Folder Options.....	10
Do Not Save Recent Documents	6	Disable Ability to Modify File Types.....	10
Clear Recent Documents at Log off	6	Disable Registry Editing Tools.....	11
Hide Settings	6	Disable Win Old Apps, No Real Mode MS-DOS Apps	11
Remove Network Connections.....	6	Disable Task Manager.....	11
Hide Find, Hide Run, Hide Shutdown, No Help, Hide Log Off	6	Disable Lock Workstation.....	11
Hide Common Groups.....	6	Disable Change Password	11
Hide Instrumentation.....	6	Hide 'C' in Explorer.....	11
No Network Places.....	6	Disable Tray Context menus	11
No Drag and Drop	6	Disable Moving Bands	11
Hide Admin Tools.....	7	Disable Customise bands.....	11
Hide Setting in Taskbar	7	Disable Low Disk Space Checks.....	11
No Toolbars on Taskbar	7	Disable Internal CD Burning (XP)	11
Lock the Taskbar.....	7	No Win Keys.....	11
No Clock on Taskbar.....	7	No Windows Update	11
No Tray Items on Taskbar.....	7	No Save Setting	11
Hide Administrative Tools	7	Hide Drives and Restrict Drive Access	12
Win Security (Terminal Services)	7	Internet Explorer.....	13
Control Panel.....	8	No Password Caching.....	13
Old Style Control Panel (XP).....	8	No Right Clicking/Context Menus	13
Hide Control Panel in Explorer	8	No Browser Options	13
Restrict the Display Panel	8	No Browser Save As	13
Hide Background, Screensaver Appearance, Setting, and Active Desktop Pages.....	8	No Favourites	13
Hide Device Manager Page.....	8	No File -> Open.....	13
Hide Hardware Profiles	8	No Find Files.....	13
Hide File System Button, Hide Virtual Memory Button	8	No Select Download Directory.....	13
Disable Password Control Panel.....	8	No Full Screen/Theatre Mode	13
Hide Profile, Admin and Change Password Pages	8	No Toolbar, No Toolbar Options.....	13
Disable Network Access Control	8	No Links Bar	13
		No View Source	13
		No Navigation Buttons	13
		No File - > Print.....	13
		No Browser Bars	13

- Always prompt when downloading 14
- No Mail and News Menu Items 14
- No Browser Close 14
- No File -> New 14
- No Address Bar 14
- No Help Menu, No IE/Netscape Help, No Feedback 14
- No Tip of the Day, No Tour/Tutorial 14
- No Expanded New 14
- No Go Button 14
- No Auto Complete 14
- No File URL's 14
- No IE 6 Error Reporting 14
- IE Control Panel 15
- Hide General Tab 15
- Disable Home Page Buttons 15
- Disable Cache Settings Button 15
- Disable Cache Settings Dialog 15
- Disable History Buttons 15
- Disable Colours Setting 15
- Disable Languages Tab 15
- Disable Links Setting 15
- Disable Fonts Dialog 15
- Disable Languages Dialog 15
- Hide Content Tab 15
- Disable Rating 15
- Disable Certificates 15
- Disable Certif Pers 15
- Disable Certificate Publishers 15
- Disable Certificate Site 15
- Disable Form Suggest 15
- Disable Form Suggest Passwords 15
- Disable Profile Buttons 15
- Hide Connections 15
- Disable Connection Wizard 15
- Disable Connection Settings 15
- Disable Autoconfig Settings 15
- Disable Proxy Settings 16
- Disable Advanced Tab 16
- Hide Advanced 16
- Hide Security 16
- Disable Security Change 16
- Disable Security Add Sites 16
- Hide Programs 16
- Disable Calender Contact 16
- Disable Messaging 16
- Disable Reset Web Settings 16
- Disable Check if Default Browser 16
- Disable Microsoft Wallet Settings 16
- Disable Privacy Tab 16
- Network and Security 17
- Persistent Network Mappings 17
- Hide Entire Network in Network Neighbourhood 17
- Hide Network Connect and Disconnect in Explorer 17
- Disable General Password Caching 17
- Do not Display Last Logon Name (NT/2000) 17
- Other Features 18
- Automatically Log into Windows 18
- Force the Use of Automatic Logon 18
- Disable Automatic Logon Shift Override Feature 18
- Default Download Directory 18
- Disable File Download in Internet Explorer 18
- Click to confirm all saved settings 18
- Refresh Security Features 18

IMPORTANT INFORMATION

This only applies to the Evaluation Version of the SmartTimer Client, and cannot be changed.

However, if you purchase the SmartTimer System, you will be given new information which you should write down in a spot like this inside the SmartTimer Configuration Guide.

Your Access Code is

SMART3191

(Please note the Access Code is Case Sensitive)

SERVER IP ADDRESS

203.46.120.40

PORT NUMBER

8000

OPERATOR ID	LOCATION ID
1	1

Multiple Location Information
(Optional)

ID	Location Name
<i>Not applicable</i>	

SmartTimer Quick Start Guide

Instructions for Smarttimer Client V2.5 Setup and Install

1. Take the executable file from the web site, email, or CD that has been sent to you, and place it on each computers hard disk drive.
(If you have already previously installed a older version of the SmartTimer Client, please make sure you remove it prior to installing the new version).
2. Run the executable from the hard disk drive.
3. Click 'Next >' to continue the install
4. By default it will want to install the Smarttimer Client in a directory called 'C:\Program Files\Smartware'

Here you can increase security by changing the default install directory, by inserting your own, preferably under the windows directory ie.
c:\windows\manage
c:\windows\auxtools
5. Click 'Next >' to continue the install.
6. It will then ask you to restart your computer.
7. Using My Computer, or Windows Explorer, locate the file Client.exe located in the program directory where you installed the Smarttimer Client.
8. Run the program Client.exe
9. SmartTimer Client is now installed and running.
10. Next you will have to configure Security, and other confidential settings appropriate to the Smarttimer Client and your particular settings.

Smarttimer Security

1. Please type in the security code provided to you for your own security access.

(Please note, each client receives a different custom build of the code which has their own access code embedded into the client. No other access code will function apart from Smartware's, yours, and any particular code you set in the security).

2. Click on the Button 'Configure Security'

- A. Click on the Tab Basic Security Measures
- B. If not checked, check 'Automatically Run SmartTimer Client on Login'
- C. If not checked, check 'Automatically Log Out CTRL-ALT-DEL'
- D. If not checked, check 'Stop Open Programs on Exit'
- E. Type in the Default Resolution you want your monitor to be set to.
- F. Type in the Default Web Page you want Internet Explorer to by continuously set to.
- G. If you want the SmartTimer Client to act as a pseudo screen saver using the embedded web page as a screen saver (using such tags as the meta-refresh tag to rotate screens much like a screen saver here), put in your delay in minutes, if you do not want a pseudo screen saver then place a 0 in the minutes box.
- H. Click the Save Changes Button
- I. Click the Save Config Changes Button

3. Click on the Button 'Configure Client'

This section allows you to configure the overall appearance of the smarttimer client interface, from colours to individual fonts.

Notes:

When putting in colours, you can used the same colour format as web pages, and it will be automatically converted to the correct colour numbers used by the SmartTimer Client program.

When setting the Scrolling Banners Multiple Line Feature, you need to press SHIFT-RETURN to put a new line in, and a blank line should be included at the end of the banner.

The Float on Top of other Programs option should not be checked until very last, otherwise it may make things difficult in selecting some configuration options.

Click the Save Config Changes Button once you are happy with the changes made to the configuration.

4. Click on the Button 'System Settings'

This section allows you to adjust the system settings to connect to the SmartTimer Server, Validation Options, and Additional Password Protection.

Click on the Password Protection Tab

Here you can set your own private password for your staff to use. To set, type in the password you want to use twice, and the Master Override Code that we have provided to you. Once these have been typed in, press the Set Local Password Button to set the password. This password has all the same privileges as the one we gave you, but not the ability to adjust any passwords.

Click on the Edit System Properties Tab

These settings should have already been filled out by us, in our pre-configuration for you. Though you should check these off against the confirmation email we send you to ensure all settings are correct.

Time Out should be set to between 10-20 seconds.

Validate PIN before Starting the Time System should be left checked.

5. Click on the Button 'Advanced Security'

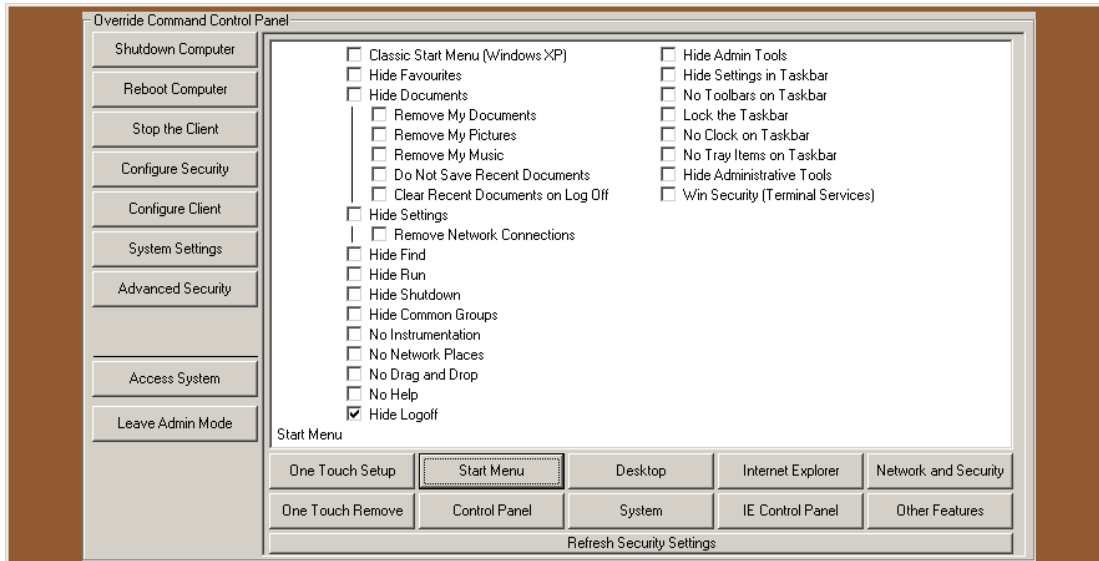
This section does rely on editing the system registry, and needs administrator rights to apply. So the client should be installed under administrator privileges, security set, then administrator privileges revoked under windows 2000.

To simplify the advanced security options, click on the button One Touch Setup to apply basic security features, and One Touch Remove to remove the basic security features. Once basic measures have been applied, using the other 8 categories, you can then customize your security needs to match your own circumstances.

To assist you, the rest of this manual contains the Advanced Security extract from the main SmartTimer Configuration Guide. It is recommended that you read this extract before you decide to play around with any of the advanced security options.

6. Reboot the Computer

Advanced Security



The Advanced Security section can only be worked with while the program has rights to access the system registry. This means the program needs to be running with administrator privileges for the changes made here to apply.

Also note: Each setting is applied immediately, and while some settings will take immediate effect, a reboot may be in order for other elements to be affected.

One Touch Setup

One Touch Remove

These two buttons apply and remove the basic common security protocols for the SmartTimer Client.

It is recommended that you start with the One Touch protocols, unless you wish to customise your security protocols (these One Touch protocols are accessed through the One Touch Setup and One touch Remove Buttons).

Start Menu

These protocols affect the structure and layout of the Start Menu and Taskbar in Windows 98, Me, 2000 and XP.

Classic Start Menu (Windows XP)

Forces the use of the Windows 98/2000 layout instead of the XP layout

Hide Favourites

Hides the Favourites folder in the Start Menu

Hide Documents

Hides the Documents Folder in the Start Menu.

Remove My Documents, Remove My Pictures, Remove My Music

Clicking these will remove these sub folders from the Documents folder in the Start Menu

Do Not Save Recent Documents

Clicking this will cause the OS not to update the Recent Documents section of the Documents Folder with the latest files/pages opened.

Clear Recent Documents at Log off

This will cause the recent documents section to be blanked when a windows log off/reboot command is generated.

Hide Settings

This causes the Settings section to be hidden in the Start Menu

Remove Network Connections

This removes the Network Connections folder from the Settings Menu

Hide Find, Hide Run, Hide Shutdown, No Help, Hide Log Off

These remove the appropriate commands from the Start Menu

Hide Common Groups

Removes the Common Groups folders from the Start Menu (these are program folders that are visible to all users).

Hide Instrumentation

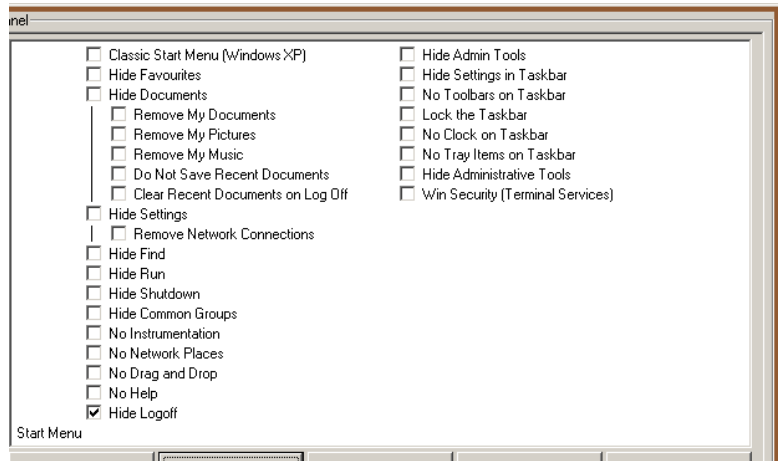
This setting stops Windows from recording user tracking information including which applications a user runs and which files and documents are being accessed.

No Network Places

Removes the Network Places from the System

No Drag and Drop

Denies the ability to drag and drop items onto the task bar.



Hide Admin Tools

This hides the admin tools on the Start Menu

Hide Setting in Taskbar

Prevents you accessing Taskbar settings

No Toolbars on Taskbar

Removes any toolbars on the Taskbar

Lock the Taskbar

Prevent changes to the Task Bar

No Clock on Taskbar

Remove the Taskbar Clock

No Tray Items on Taskbar

Removes any tray items from the Taskbar

Hide Administrative Tools

This hides the admin tools on the Start Menu

Win Security (Terminal Services)

This setting is used to hide the Windows NT Security menu item on the Start Menu of a terminal server session.

Control Panel

Old Style Control Panel (XP)

Forces the use of the 2000 style control panel in Windows XP.

Hide Control Panel in Explorer

Removes the control panel from explorer.

Restrict the Display Panel

Deny access to the Display Settings Control Panel.

Hide Background, Screensaver Appearance, Setting, and Active Desktop Pages.

Removes the appropriate pages from the Display Settings Control Panel.

Hide Device Manager Page

Restricts access to the Device Manager in Computer Properties.

Hide Hardware Profiles

Remove the Hardware Profiles page in Computer Properties

Hide File System Button, Hide Virtual Memory Button

Removes the appropriate buttons from the Computer Properties section.

Disable Password Control Panel

Restrict access to the Password Control Panel

Hide Profile, Admin and Change Password Pages

Hides the Profile, Admin and Change Password Pages in the Password Control Panel

Disable Network Access Control

Disable access to the Network Configuration pages.

Hide Net Setup ID Page, Hide Printer and File Sharing

Selecting these will disable the respective pages within the Network Access Control Panel

Hide Network Access Control

Hide the Network Access Control Panel

Hide Set Program Access

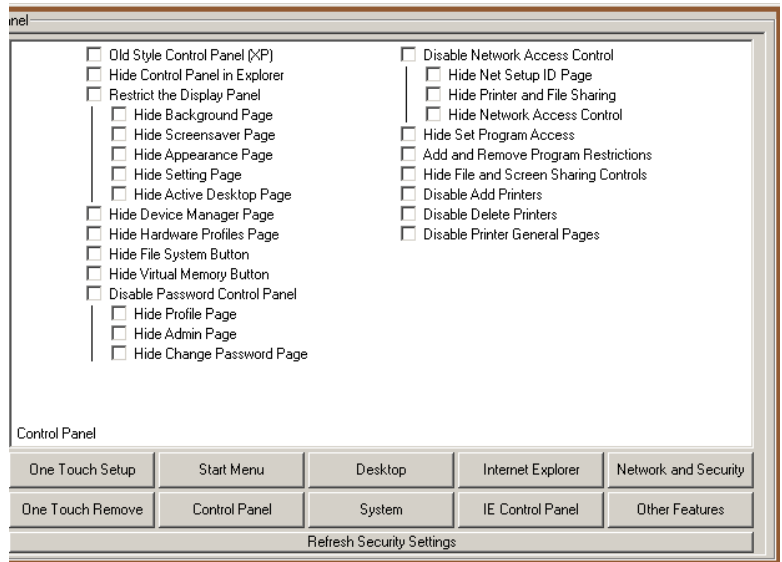
This restriction is used to hide "Set Program Access and Defaults" on the Add or Remove Programs page.

Hide Add/Remove Program Restrictions

These restrictions apply to the Add/Remove Programs feature of Control Panel. They allow you to entirely or individually disable components.

NoAddRemovePrograms - Disable Add/Remove Programs

NoRemovePage - Disable Change and Remove Programs



NoAddPage - Disable Add Programs

NoWindowsSetupPage - Disable Windows Components Wizard

NoAddFromCDorFloppy - Hide "Add a program from CD-ROM or disk" option

NoAddFromInternet - Hide "Add programs from Microsoft" option

NoAddFromNetwork - Hide "Add programs from your network" option

NoServices - Go directly to Windows Components Wizard

NoSupportInfo - Disable Support Information

Hide File and Screen Sharing Controls

Enabling this options hides the file and printer sharing controls, stopping users from disabling or creating new file or printer shares

Disable Add Printers, Disable Delete Printers

Removes the ability to Add or Delete printers.

Disable Printer General Pages

Removes the ability to see the general page in Printer Properties

Desktop

Disable Active Desktop

Turns off the Active Desktop

Hide My Computer

Hides the My Computer Icon on the Desktop

Hide Properties in My Computer

Hides the Properties for the My Computer Icon

Hide My Documents, Hide Recycle Bin

Hides the My Documents, or Recycle Bin Icons on the Desktop

Hide All Items on Desktop

Hide all icons, and material on the desktop

Hide Network Neighbourhood

Hide the Network Neighbourhood Icon on the Desktop

Hide Workgroup

Hide the Workgroup Icon within Network Neighbourhood

Don't Save Settings on Logout

Do not save any settings when Logging out of Windows

Disable Screen Saver

Turn off any screen saver

No Right Click on Desktop

Disable the ability to right click on the desktop

No ability to customise Toolbars

Deny the ability to customise explorer toolbars

No ability to change or hide Toolbars

Deny the ability to change or hide toolbars in explorer

Remove File Menu from Explorer

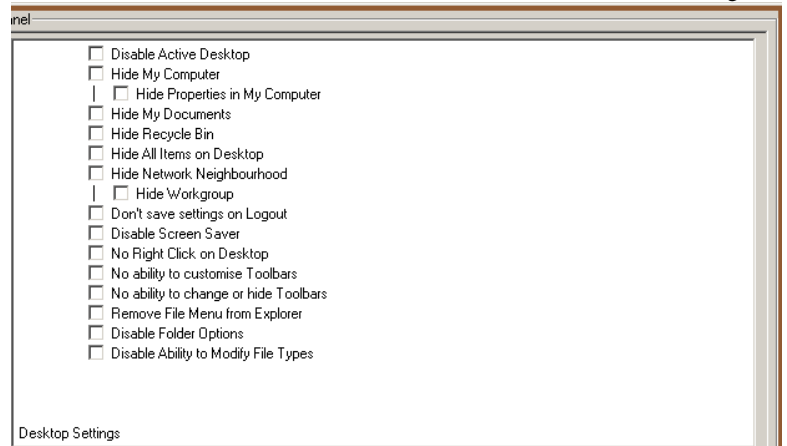
Removes the File Menu item from Explorer

Disable Folder Options

Removes the ability to select Folder Options from the Tools Menu

Disable Ability to Modify File Types

Removes the ability to modify file types and Associations



System

Disable Registry Editing Tools

Stops people using the Regedit tools provided with Windows

Disable Win Old Apps, No Real Mode MS-DOS Apps

Turns off DOS programs run from the command prompt

Disable Task Manager

Turns off Task Manager in 2000 and XP when you press CTRL-ALT-DEL

Disable Lock Workstation

Turns off Lock Workstation in 2000 and XP when you press CTRL-ALT-DEL

Disable Change Password

Turns off Change Password in 2000 and XP when you press CTRL-ALT-DEL

Hide 'C' in Explorer

Hide C Drive from Explorer so a customer cannot see it.

Disable Tray Context menus

This setting removes the context menus (right click on the taskbar) for the system tray, including the Start button, Tab control, and Clock.

Disable Moving Bands

This setting disables tool bar customisation.

Disable Customise bands

By default users are able to select which toolbars are displayed either by right clicking the toolbar itself, or by changing the options from the View menu. This tweak locks the toolbars, removing the ability to change which are displayed.

Disable Low Disk Space Checks

Turns off low disk space notification

Disable Internal CD Burning (XP)

Stops XP native CD Writing if a burner is installed

No Win Keys

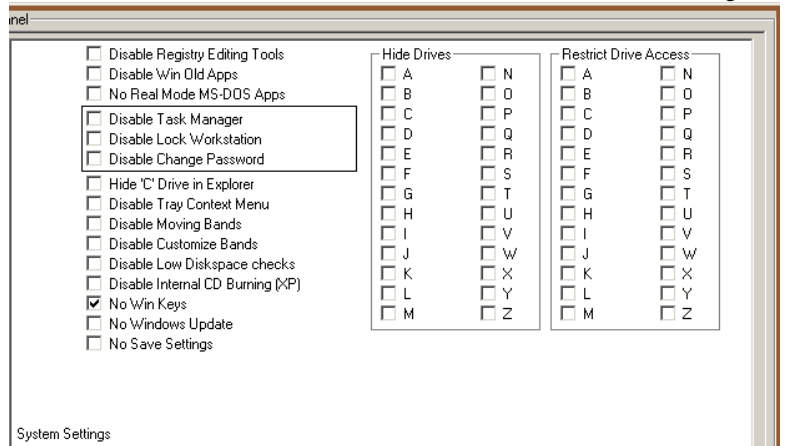
Disable Win Keys

No Windows Update

Remove the Windows Update Option

No Save Setting

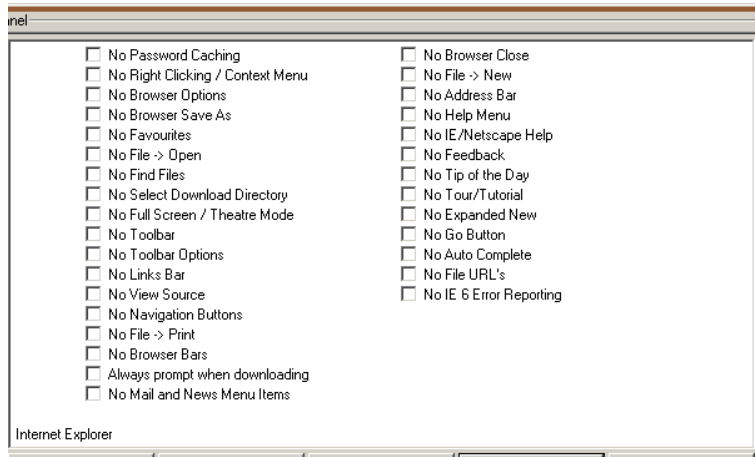
Do not save any setting changes



Hide Drives and Restrict Drive Access

Hide and/or Restrict Access to the selected drive letters

Internet Explorer



No Password Caching

Remove the ability to save passwords

No Right Clicking/Context Menus

Remove the ability to right click on the web page

No Browser Options

Removes Internet Options from the Tools Menu

No Browser Save As

Remove Save As from the File Menu

No Favourites

Removes the Favourites Icon

No File -> Open

Remove the Open command from the File Menu

No Find Files

Removes the ability to find files from the File Menu

No Select Download Directory

Prevents people changing the default download directory

No Full Screen/Theatre Mode

Prevents people from setting the browser to full screen mode

No Toolbar, No Toolbar Options

Prevents people customising the Toolbar or removes the ability to get the Toolbar options

No Links Bar

Removes the Links Bar

No View Source

Removes the ability to view the source HTML of web page

No Navigation Buttons

Removes the Navigation Buttons from the browser

No File - > Print

Prevents printing from the browser

No Browser Bars

Disables changes made to IE toolbars.

Always prompt when downloading

Always ask to confirm before downloading

No Mail and News Menu Items

Remove the mail and news menu items from the browser

No Browser Close

Removes the Close/Exit option from the browser

No File -> New

Removes the New browser instance from the browsers file menu

No Address Bar

Removes the Address Bar from the browser

No Help Menu, No IE/Netscape Help, No Feedback

Removes the appropriate help options from the menu

No Tip of the Day, No Tour/Tutorial

Removes the Tip of the Day, and the Tour options from the menu

No Expanded New

Removes the sub menu that appears when you click on File | New

No Go Button

Removes the Go Button from the toolbar

No Auto Complete

Forces the user to type in a full URL, there is no auto completion

No File URL's

Removes the ability to open a local file in the browser

No IE 6 Error Reporting

Removes any IE 6 bug reports if there is an error in the browser

IE Control Panel

Hide General Tab

This Hides the General Tab in Internet Options.

The Following commands all affect individual pages and elements within the General Tab.

Disable Home Page Buttons

Disable Cache Settings Button

Disable Cache Settings Dialog

Disable History Buttons

Disable Colours Setting

Disable Languages Tab

Disable Links Setting

Disable Fonts Dialog

Disable Languages Dialog

Hide Content Tab

This hides the Content tab in the Internet Explorer Control Panel

The Following commands all affect individual pages and elements within the Content Tab.

Disable Rating

Disable Certificates

Disable Certif Pers

Disable Certificate Publishers

Disable Certificate Site

Disable Form Suggest

Disable Form Suggest Passwords

Disable Profile Buttons

Hide Connections

This option allows you to hide the Connections Tab in the IE Control Panel

The Following commands all affect individual pages and elements within the Connections Tab.

Disable Connection Wizard

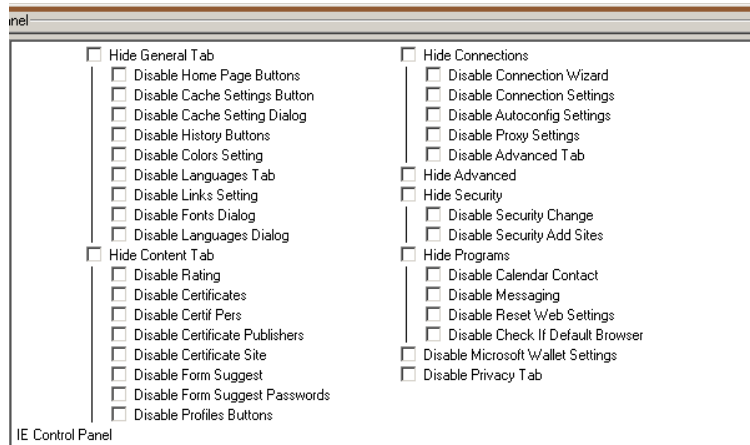
Turns off the Internet Connection Wizard/Dialler configuration

Disable Connection Settings

Turns off the ability to adjust the connection settings (i.e. selecting dial up connections)

Disable Autoconfig Settings

Removes the ability to adjust the Auto configuration settings



Disable Proxy Settings

Turns off the ability to adjust the Proxy Server Settings. Ideal if you wish to force the use of a proxy server on the browser.

Disable Advanced Tab

Removes the Advanced Tab from the IE Control Panel

Hide Advanced

Remove the advanced button from the Proxy Settings Section IE Control Panel

Hide Security

Remove the Security section from the IE Control Panel

Disable Security Change

Turns off the ability to change security settings

Disable Security Add Sites

Turns off the ability to add Web Sites to the different security zones

Hide Programs

Hides the programs tab of the IE Control Panel

Disable Calender Contact

Remove the Calender Contact section from the IE Control Panel

Disable Messaging

Turns of the messaging features of IE

Disable Reset Web Settings

Turns off the ability to reset any changes to IE back to the default settings

Disable Check if Default Browser

Stops IE checking to see if it was the default browser

Disable Microsoft Wallet Settings

Turn of the settings for the Microsoft Wallet

Disable Privacy Tab

Hides the Privacy Tab

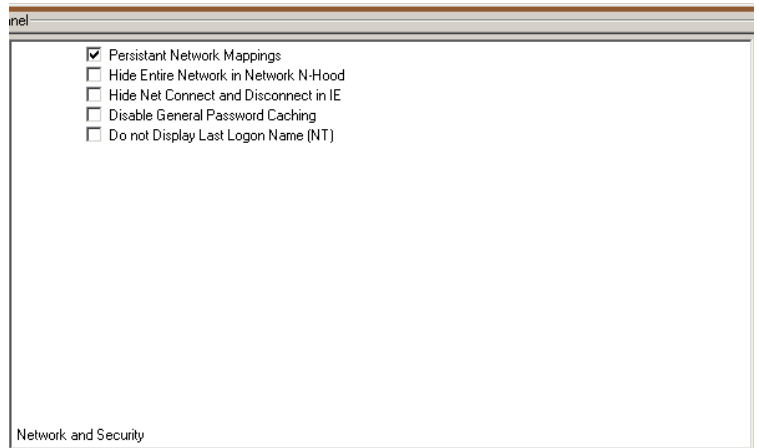
Network and Security

Persistent Network Mappings

Remember any Network Mappings in Network Neighbourhood.

Hide Entire Network in Network Neighbourhood

Hides the Entire Network in Network Neighbourhood, thus only allowing you to see your own workgroup



Hide Network Connect and Disconnect in Explorer

Prevents users from making additional network connections by removing the Map Network Drive and Disconnect Network Drive buttons from the toolbar in Explorer and also removing them from the Context menu of My Computer and the Tools menu of Explorer.

Disable General Password Caching

This turns off general password caching, like the passwords used for shares and so forth. This enforces internal security by making people type in share passwords when required.

Do not Display Last Logon Name (NT/2000)

Selecting this will mean that when windows logs on, it will not show the user name of the last person to successfully log on in the log on dialog

Other Features

Automatically Log into Windows

This will allow windows 2000 and XP to automatically log a single user in

Force the Use of Automatic Logon

Normally when a Windows machine is configured to automatically logon to a specified account users can bypass this and enter alternate account information. This tweak forces the machine to auto logon and to ignore any bypass attempts.

Disable Automatic Logon Shift Override Feature

When using the automatic login feature it is possible for a user to hold the Shift key to bypass the login sequence and enter a username and password. This feature disables the ability to override the function.

Default Download Directory

This allows you to choose the default download directory for Internet Explorer

Disable File Download in Internet Explorer

Turns off the ability to download files in Internet Explorer. Only web pages, and pictures will be downloaded.

Click to confirm all saved settings

This is a reminder function especially to save the manually entered information like user name and password.

Refresh Security Features

Clicking this button will allow you to recheck security features as it rereads the registry looking for appropriate values for the security panel display.